

Glaciology Resources

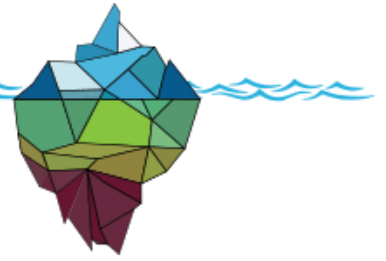
Thank you for taking interest in our series of glaciology resources titled “The Power of Ice”.

This resource pack was developed in partnership with Prof. Doug Benn of the School of Geography and Sustainable Development, University of St Andrews.

These resources were made as part of the NERC-NSF research projects: Calving Laws for Ice Sheet Models (CALISMO) and Disintegration of Marine Ice Sheets: Novel Optimized Simulations (DOMINOS) – International Thwaites Glacier Collaboration.

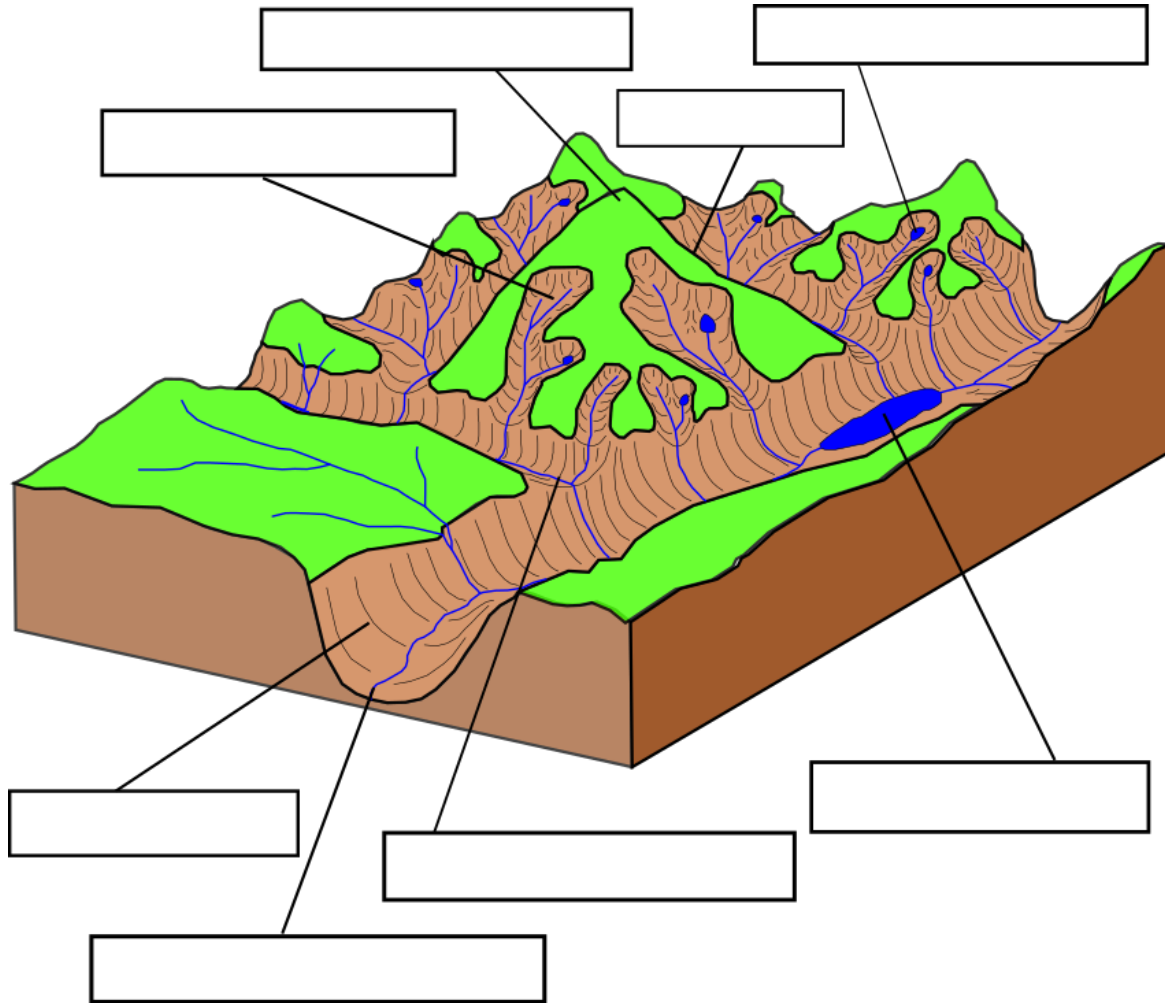
Special thanks is also due to Robert Jones and Bethany Hudd who wrote all materials. The development of this resource would not have been possible without the generous support of the GeoBus sponsors, which we gratefully acknowledge.





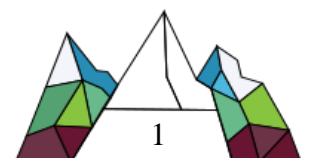
Label That Landform!

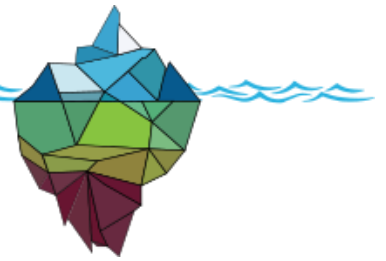
Task 1: The diagram below shows a glaciated landscape after the ice has all melted away, leaving behind many features associated with glacial erosion. Label the diagram using words from the box underneath. Each word should only be used once.



Ribbon Lake	Arete	Corrie	U-Shaped Valley	Corrie Lochan
Hanging Valley		Pyramidal Peak		Misfit Stream

Task 2 – Identify the features of glacial erosion in each picture. Note, some pictures may contain more than one glacial feature.





Picture – Chubbyrevision.weebly.com



Picture – Wikimedia.org



Picture – flickr.com



Picture – lobster.co.nz

