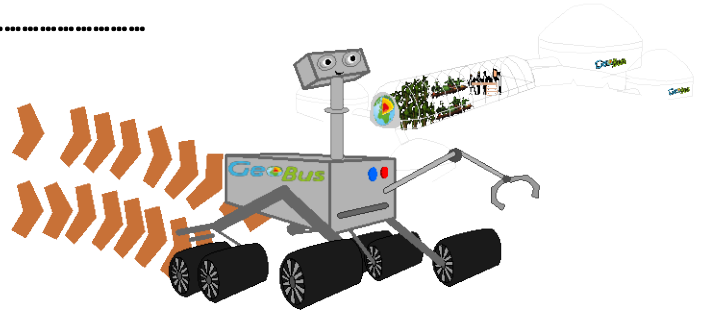


Name: ..... Date .....

# Terraforming Mars



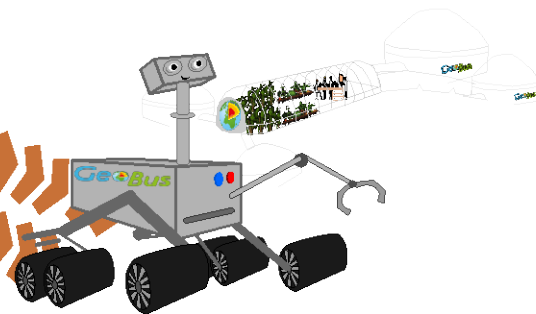
Complete the chart using the terms below;

- colour
- polar ice-caps
- very cold temperature
- no rivers
- storms
- no plants or animals
- volcanoes
- wind
- underground water
- clouds
- distance from Sun or seas
- dry land
- no air (oxygen)
- surface covered in ice

How is Mars similar to Earth?	How is Mars different from Earth?



# Terraforming Mars



Which of the differences would have to be made into similarities in order to terraform Mars?

If life of any kind were to be found on Mars, do you think this would stop humans from developing the planet? Should it?

